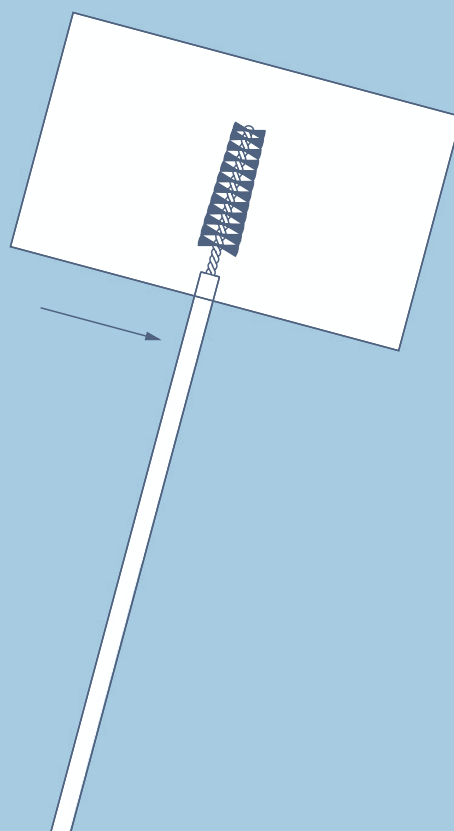
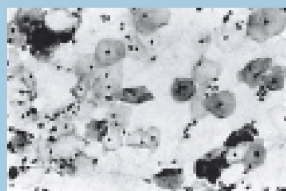
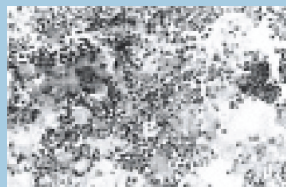
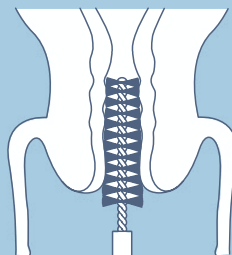


# MANUAL DETECTA

- gently insert the Detecta into the cervix
- rotate only once to obtain the sample
- gently withdraw the Detecta without rotating
- smear sample on a slide with one rotation of the Detecta
- fixate the slide immediately
- sample is ready for examination



Gynetics Medical Products n.v.  
Rembert Dodoensstraat 51 / 3920 Lommel, Belgium  
tel. +32 11 64 58 72 / fax +32 11 64 06 77  
info@gynetics.be / www.gynetics.be

**GYNETICS**<sup>®</sup>  
Practise better Medicine